

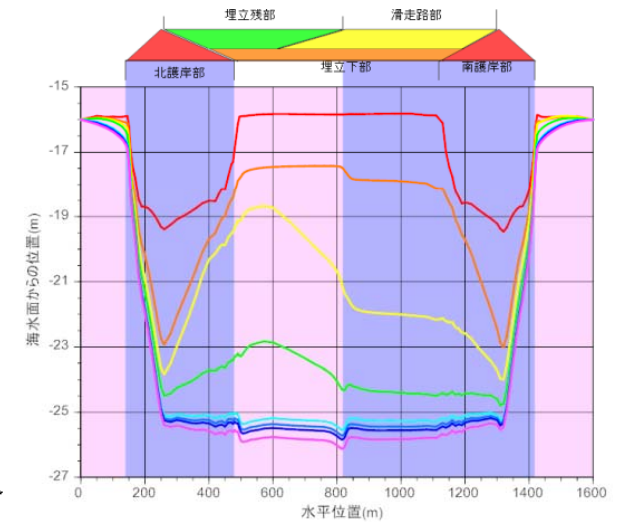
Geotechnical Engineering Subarea Social Infrastructure Engineering Area Division of Global Architecture Graduate School of Engineering

Research Subjects

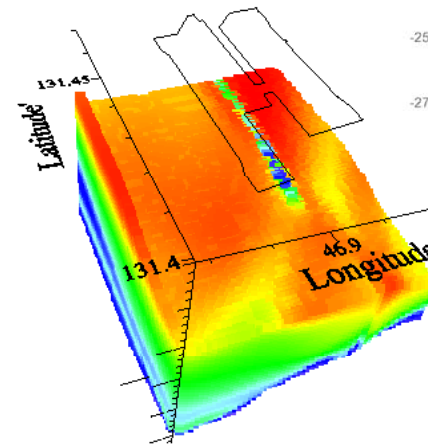
- Failure Mechanism of Road Embankment and Estimation of Failure Displacement
- Seismic Retrofitting Method of Road Embankment
- Seepage at Bank and Countermeasures with Gabion and Drain Pipe
- Estimation of Effects induced by Surface Fault and Countermeasures
- Countermeasures against Tsunami with Earth Bank
- Development of Analytical Technique for Soils and Structure Foundations
- Spatial Interpolation and Its Statistical Application of Geo-informatics
- Slope Prevention against Disaster Caused by Heavy Rain
- Microtremor Measurement with Very High Density
- Continuous Evaluation of Strong Motion and Huge Tsunami

Staffs

Prof. Ken-ichi TOKIDA TEL: 06-6879-7623 tokida@civil.eng.osaka-u.ac.jp
 Associate Prof. Kazuhiro ODA TEL: 06-6879-7625 oda@civil.eng.osaka-u.ac.jp
 Assistant Prof. Yoshiya HATA TEL: 06-6879-7626 hata@civil.eng.osaka-u.ac.jp



Numerical Prediction of Settlement of Man-made Island



3D Model of Sea Bed Deposits around Kansai International Airport



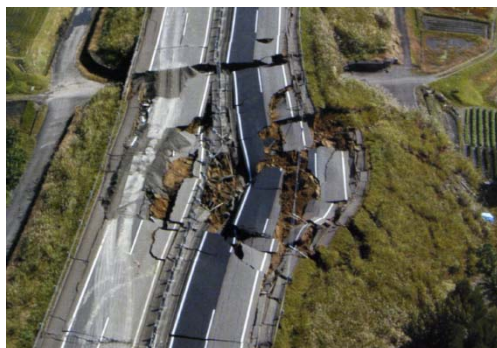
Before Over Flow



After Over Flow



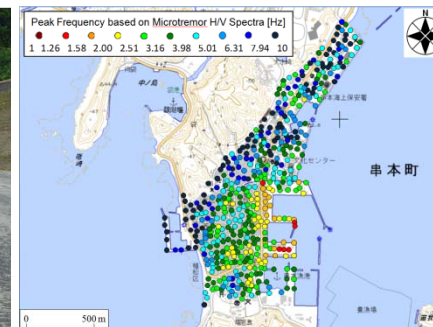
Model Tests on Resistance of Earth Bank against Tsunami Flood for Hardware Measures with use of Earth Bank



Sliding Failure of Road Embankment



Crest Reinforcement at Road Bank



Microtremor Measurement with Very High Density