

Theme of Research

研究テーマ

We conduct research on the mechanical property of materials, members and joints and on the theory of seismic design, focussed on steel structures.

Staff

スタッフ

Motohide TADA, Professor (TEL: 7651, E-mail: tada)

Susumu KUWAHARA, Associate Professor (TEL: 7652, E-mail: kuwa)

Seiji MUKAIDE, Assistant Professor (TEL: 7653, E-mail: mukaide)

TEL: +81-6-6879-****

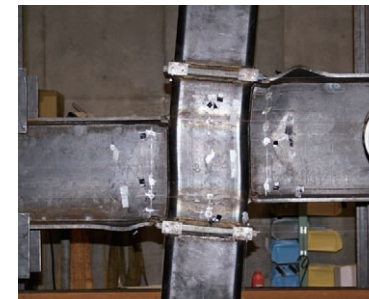
E-mail: ****@arch.eng.osaka-u.ac.jp

<http://www.arch.eng.osaka-u.ac.jp/~labo6/>

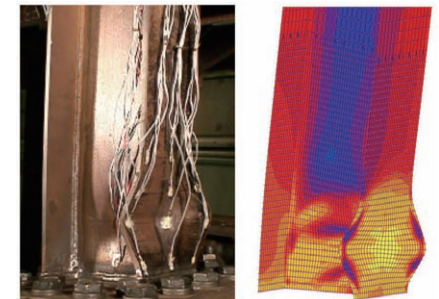
Current Studies

最近の研究内容

- ◆ Numerical Analysis of Steel Building Frame for Complete Collapsing Behavior
- ◆ Elastic Buckling Behavior Caused by Horizontal Loads to Steel Moment Frames
- ◆ Investigation of Surface Profile in HTB Friction Joints
- ◆ Structural Performance of Column-Beam Joint Panel
- ◆ Development of Tubular Damper Applied to Bolt Joint



Structural test of Column-Beam joint panel



Structural test and Analysis on Local Buckling of Steel Beam



Tubular Damper Applied to Bolt Joint



Test Room

地球総合工学専攻
DIVISION OF GLOBAL ARCHITECTURE
建築構造学講座
STRUCTURAL ENGINEERING AREA
鉄骨構造学領域
STEEL STRUCTURES SUBAREA